

# \$5,900,000 - 1880 Spartanburg Highway, Hendersonville

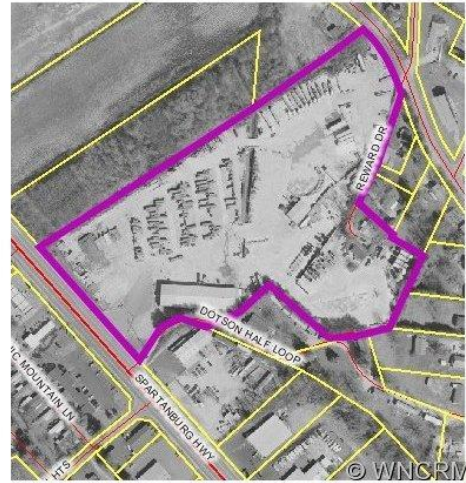
MLS® #NCM455865

## \$5,900,000

0 Bedroom, 0.00 Bathroom, 8,500 sqft  
Commercial Sale on 11.60 Acres

N/A, Hendersonville, NC

Subject would be ideal for a sales and distribution center or endless possibilities. 11.60+/- acres in prime location with high traffic count, zoned CC. Property may be subdivided into smaller tracts. One of the best development tracts on Hendersonville's south-side.



Built in 1970

## Essential Information

MLS® #	NCM455865
Price	\$5,900,000
Bathrooms	0.00
Square Footage	8,500
Acres	11.60
Year Built	1970
Type	Commercial Sale
Sub-Type	Commercial
Status	Active

## Community Information

Address	1880 Spartanburg Highway
Subdivision	N/A
City	Hendersonville
County	Henderson
State	NC
Zip Code	28739

## Amenities

Utilities Cable Available,Electricity Available,Natural Gas Available,Telephone On-Site

## Interior

Cooling Office Only

## Exterior

Roof Aluminum,Metal

Construction Block,Metal

## Additional Information

Date Listed January 7th, 2010

Days on Market 1111

## Listing Details

Listing Office Mark White And Associates



The data relating to real estate on this Web site derive in part from the Carolina Multiple Listing Services, Inc. IDX program. Brokers make an effort to deliver accurate information, but buyers should independently verify any information on which they will rely in a transaction. All properties are subject to prior sale, change or withdrawal. Neither [INSERT BROKER NAME] nor any listing broker shall be responsible for any typographical errors, misinformation or misprints, and they shall be held totally harmless from any damages arising from reliance upon this data. This data is provided exclusively for consumers' personal, non-commercial use and may not be used for any purpose other than to identify prospective properties they may be interested in purchasing. © 2021 Carolina Multiple Listing Services, Inc.

Listing information last updated on July 23rd, 2021 at 10:30pm EDT